



## BIKINI ATOLL -TRUK MASTER

Nowhere else can you dive such a fantastic collection of wrecks, including battleships, submarines, destroyers, and most notably the aircraft carrier USS Saratoga. Over 60 years later, the nuclear ghost fleet (as these wrecks are known) rest in crystal blue waters that have since become home to an abundance of marine life with thriving reefs and corals. Only since 1996 has Bikini Atoll been open to diving, making this destination a one-of-a-kind combination of spectacular historic wrecks in a remote and otherwise untouched tropical paradise.

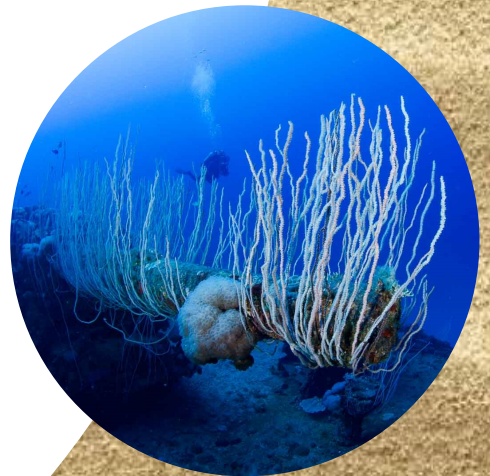
As the wrecks of Bikini Atoll are only suited for extended range diving, there will be 2 technical dives offered per day. Divers will be responsible for planning their own dives, with the assistance of the Cruise Director who has dived the wrecks of Bikini many times already. For safety, the minimum surface interval between dives is 4 hours and it is mandatory to take an afternoon off mid-trip (optional land tour and beach BBQ will be offered instead of diving).

Travel time between Ebye Island and Bikini Atoll is 23-34 hours depending on conditions. It may be possible to dive the German heavy cruiser Prinz Eugen wreck near Kwajalein as a check dive before sailing overnight to Bikini Atoll.



## ITINERARY

<b>Wed 26 July 2023</b>	Perth   Sydney Sydney   Honolulu Transfer to Hotel	1055   1655 QF 640 1925   0910 QF 3 1 night Honolulu
<b>Thu 27 July 2023</b>	Free Day to Relax	1 night Honolulu
<b>Fri 28 July 2023</b>	Honolulu   Majuro Majuro   Kwajalein	0720   1035 UA 154 1120   1220 UA 154 (Arrive: Sat 29 Jul 2023)
<b>Sat 29 July 2023</b> To <b>Tue 8 August 2023</b>	Transfer to Truk Master Up to 15 dives scheduled dives ( Up to 2 dive per day )	11 nights Truk Master
<b>Wed 9 August 2023</b>	Transfer to Airport Kwajalein   Majuro Majuro   Honolulu Transfer to Hotel	1745   1845 UA 155 1945   0230 UA 155 1 night Honolulu
<b>Thu 10 August 2023</b>	Free Day to relax and enjoy Honolulu	1 night Honolulu
<b>Fri 11 August 2023</b>	Honolulu   Sydney	1055   1755 QF 4 (Arrive : Sat 12 Aug 2023)
<b>Sat 12 August 2023</b>	Sydney   Perth	1950   2245 QF 653



**NOTE :** Please use the above schedule as an indicative time guide as the 2023 flight schedules are yet to be released. The schedule will be updated in Aug | Sept 2022.

Booking Ref: S25918 16/06/21



**DOLPHIN SCUBA DIVING**  
Unit 3, 129 Welshpool Road , Welshpool, WA 6106  
Ph: 08 9353 2488  
Email: [dolphin@dolphinscuba.com.au](mailto:dolphin@dolphinscuba.com.au)

**DIVE**  
ADVENTURES   
IATA 02341824  
Ph : 03 9646 5945